



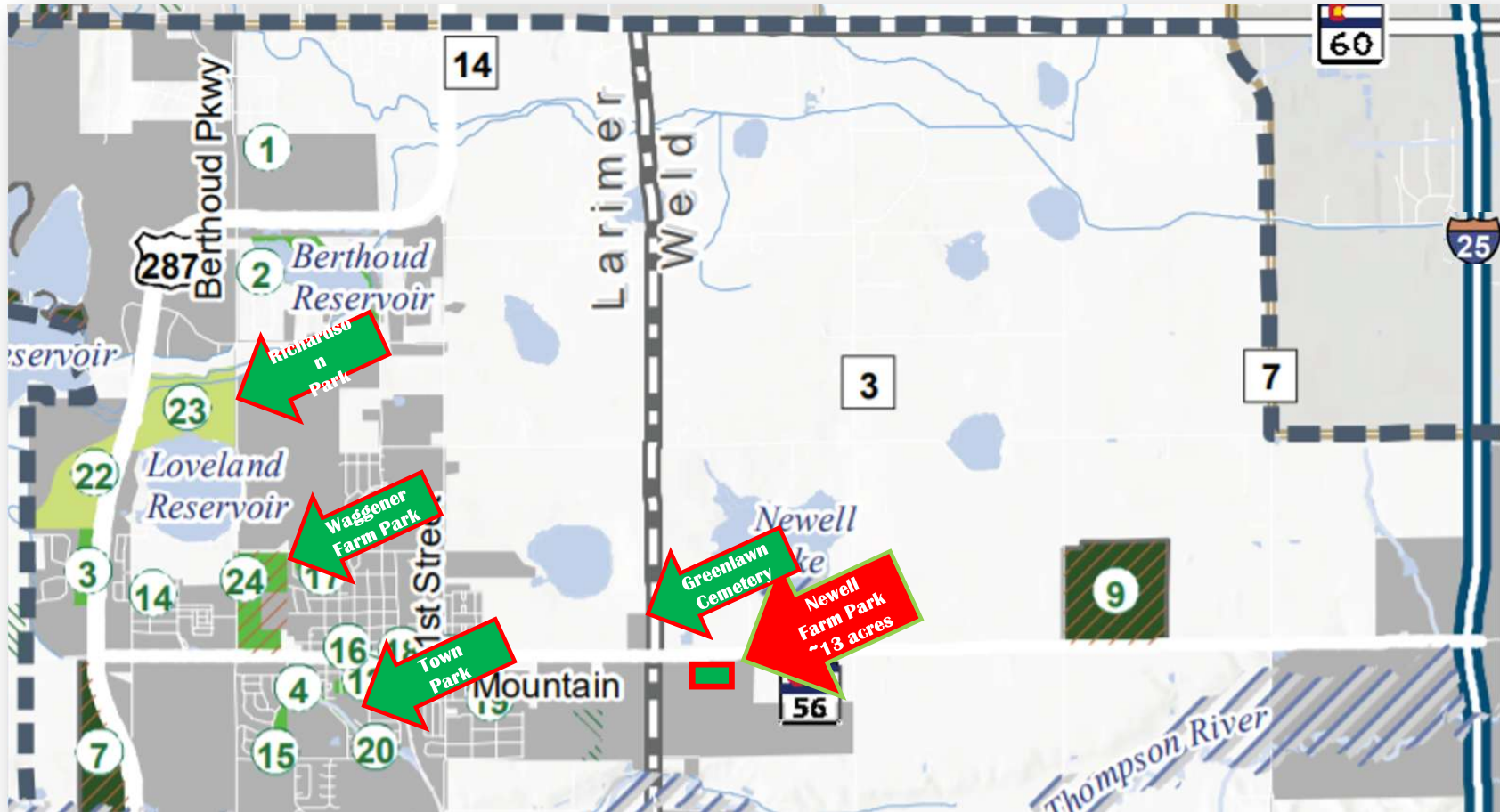
# **Tour of Newell Farm Park**

Butch Hause & Sarah Lincoln

# Newell Farm Park & Amphitheater

- Newell Farm is an historic farmstead 1.5 miles east of Berthoud
- The area was planned for “Suburban Business” or commercial build-out
- The Town of Berthoud purchased Newell Farm for a Town Park in January 2023
- The Farm is the home of the annual Farm Concert, celebrating 25 years in 2027
- In this package you’ll see where Newell Farm Park sits relative to the Town, and you’ll be taken on a walking tour of the property
- *Welcome to Newell Farm Park!*

## Newell Farm Park Relative to Berthoud's 2021 Open Space Plan



# Newell Farm Park from Greenlawn Cemetery



# The Farm with the Red Windmill



## Newell Farm – History & Context



- Ernest and Rose Newell lived on this farm from 1899 to 1957 - almost 60 years
- They were pioneers who farmed and raised sheep
- He was the town historian; she was a woman leader
- The Farm is a jewel in Berthoud's eastern gateway
- It is Berthoud's "bookend" to Waggener Farm Park
- Newell Farm Park will be preserved and open for public enjoyment into perpetuity

In 1883 W.T. Newell visited the Little Thompson Valley with his ten-year-old son Ernest. Ernest Newell later tapped his photographic memory to become the foremost authority on Berthoud history until his passing in 1962 at age 89 years.

# Berthoud's East-West Gateway Bookends

**Newell Farm Park from the East**



**Waggener Farm Park from the West**



## Farmhouse Built in 1879



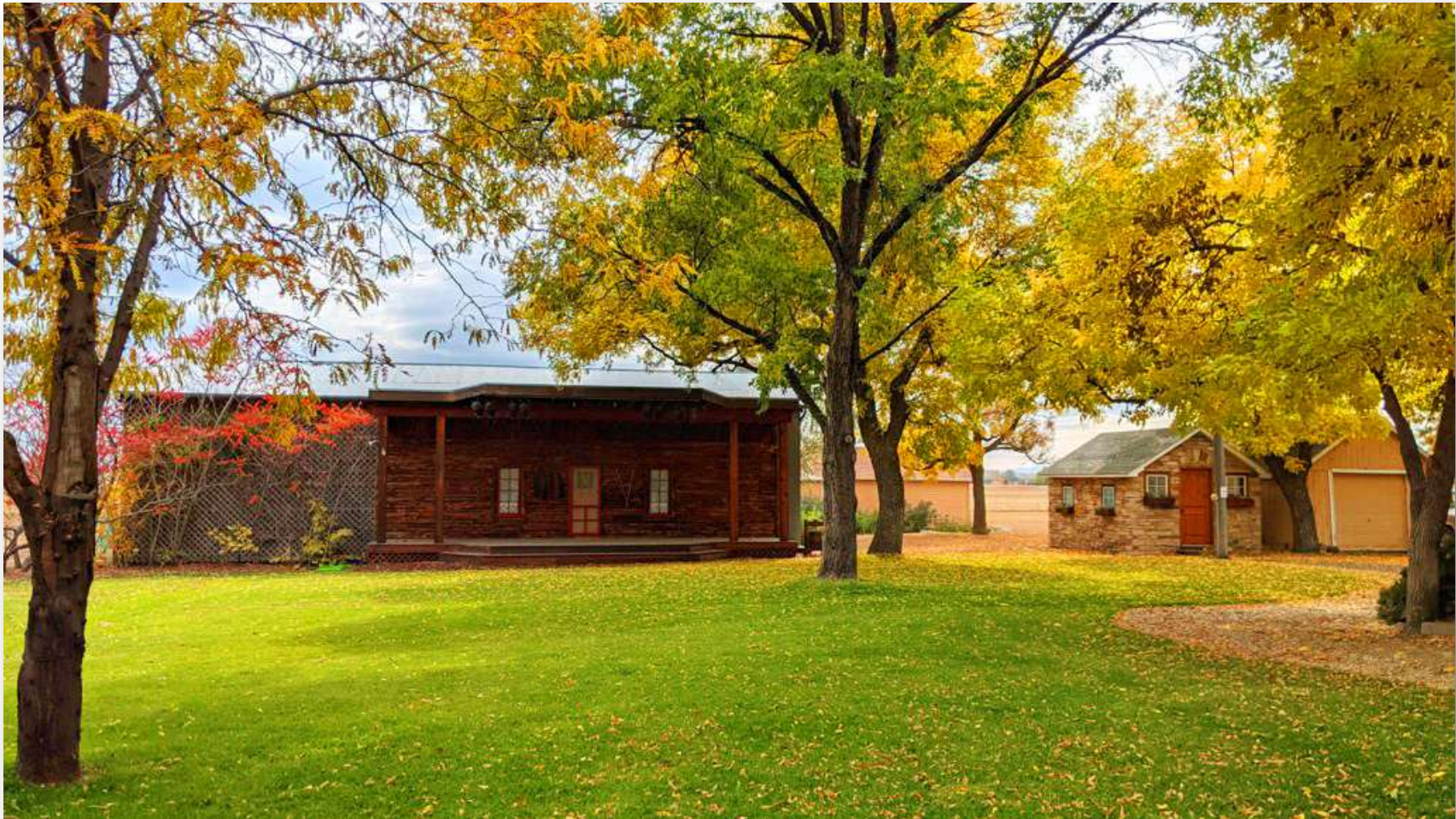
# Multiple Gardens



## Old-Growth Trees



## Amphitheater & Stage



## **The Annual Farm Concert Will Celebrate 25 Years in 2027**



## Amphitheater Looking East



## Southwest View from Amphitheater



# Southwest Open Space



## Full-Range Mountain Views



## **7 Acres of Open Space to the East**



Thank you for visiting Newell Farm Park!

[www.newellfarm.org](http://www.newellfarm.org)

